

SOLUTIONS- HOMELESSNESS, RISK, AND MITIGATING THE SPREAD OF COVID 19

Presented by:

Cheryl Shuch, Family Promise; Vera Beech, Community Rebuilders;

Courtney Myers-Keaton, CoC; Wende Randall, Essential Needs Task Force

CREATING SYSTEM FLOW TO ADDRESS
HOMELESSNESS AND MITIGATE COVID 19
SPREAD

System Flow is an efficient and coordinated process that moves people from homelessness to housing as quickly as possible.

System Flow Requires Alignment of Efforts and Resources and is essential to reducing transmission of COVID 19 among persons with no safe place to stay

SYSTEM FLOW STARTS WITH COORDINATING SYSTEM ENTRY & PRIORITIZATION

Working Together

Aligned providers and resources to ensure every person experiencing homelessness or at risk of homelessness has is accounted for and helped with the most appropriate and available support...and, in the fastest way possible.

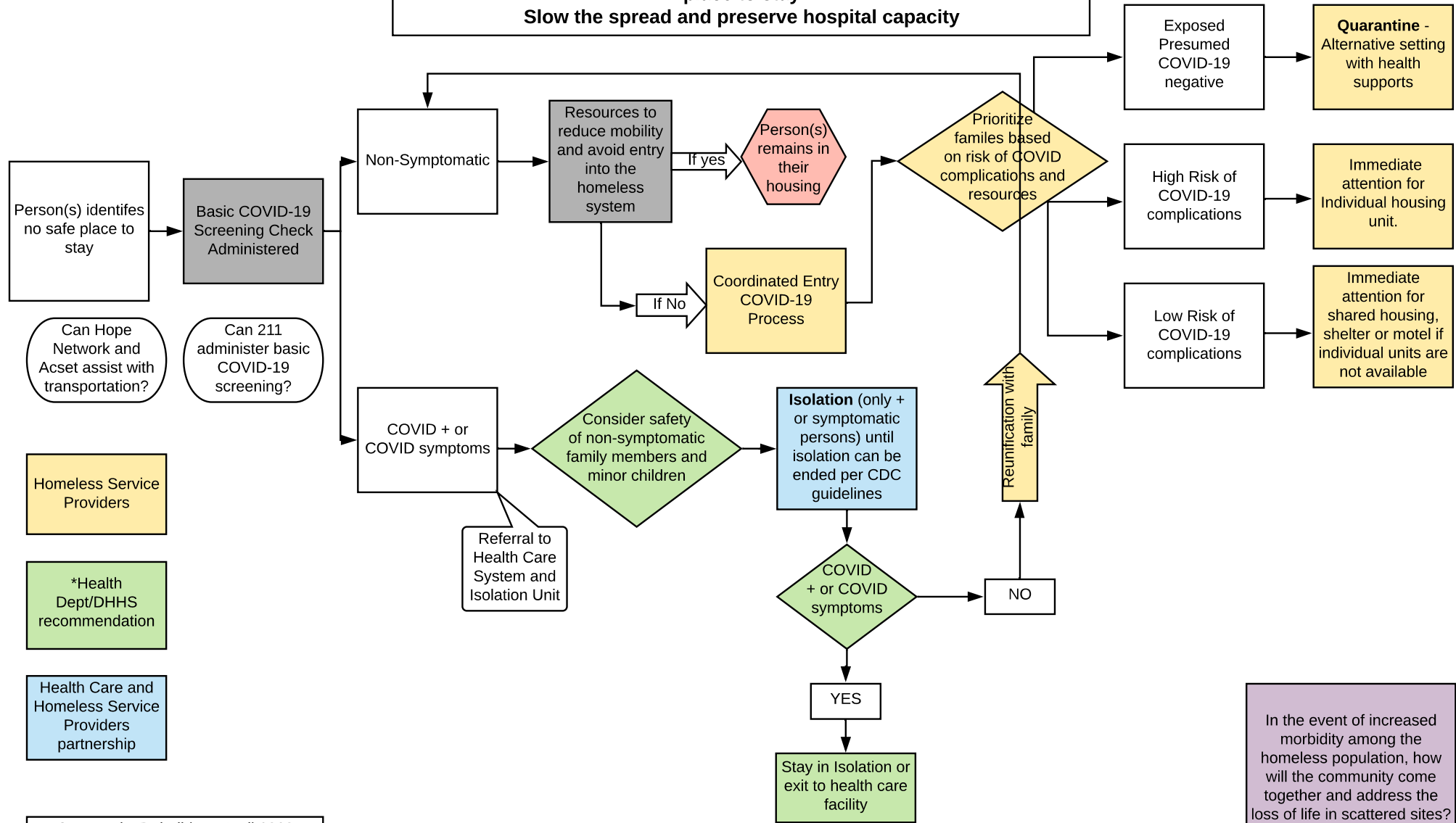
Creates System Flow by:

- Reducing first time homelessness
- Eliminating wait lists for shelter
- Reducing average length of homelessness
- Increasing exits to permanent housing
- Decreasing returns to homelessness

NEED: Implementation:

CR, Family Promise and HAP will lead in the use of Community Rebuilders new website Community Housing Connect for families to access services. No new funding is required CR is positioned to cover the cost. A COVID Screening and Workflow has been agreed upon

Reducing Transmission Risk for COVID-19 among persons with no safe place to stay
Slow the spread and preserve hospital capacity



Community Rebuilders, April 2020
 version 4

In the event of increased morbidity among the homeless population, how will the community come together and address the loss of life in scattered sites?

PREVENTION AND RAPID REHOUSING NEED

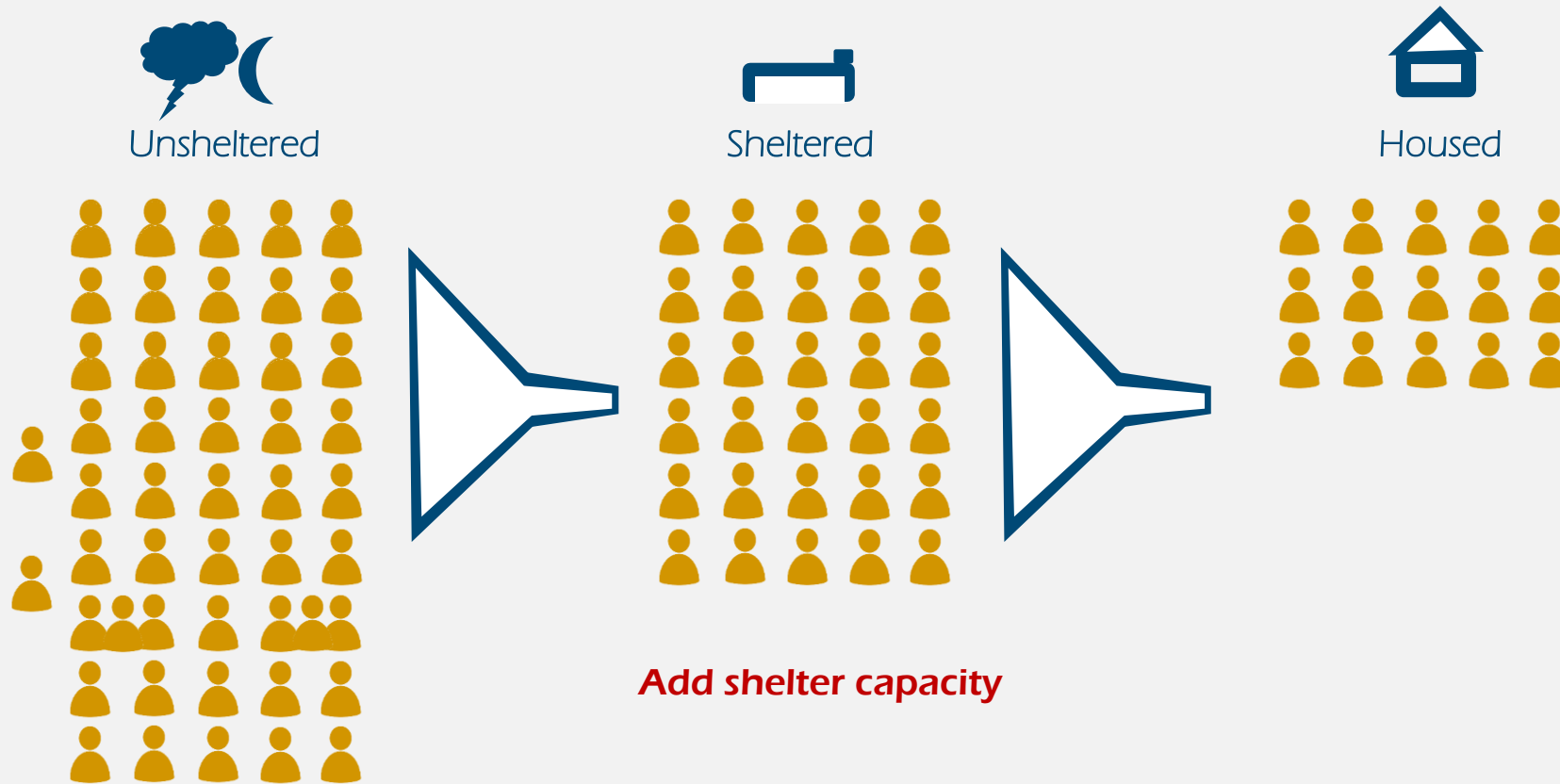
- Prevention services assist those who are currently in housing but are at risk of becoming homeless and need short term leasing, and or utility assistance to prevent them from becoming homeless
 - Rental Arrears assistance
 - Diversion/ Supported Solutions Assistance to help prevent entry into homeless system
 - Can specifically target evictions, persons who have lost income due to COVID 19 – Flexibility to help resolve the housing crisis
 - Rapid Rehousing may be provided to prevent entry into homelessness, assist with relocation
 - Rapid Rehousing may be 1-3 months when utilized for prevention or 2- 12 months when assisting individuals or families who are homeless or at risk of homelessness
 - RRH Provides longer term rental assistance to assist households to increase income with the goal of all households assisted maintaining housing permanently
 - Both prevention and rapid rehousing can provide comprehensive strengths based holistic case management services
- Anticipated community need: \$3,500,00 over the next year**

EMERGENCY NON CONGREGATE SHELTER NEED

Family Promise is leading this effort to ensure emergency hotel capacity so our community members have a safe place for their family to stay.

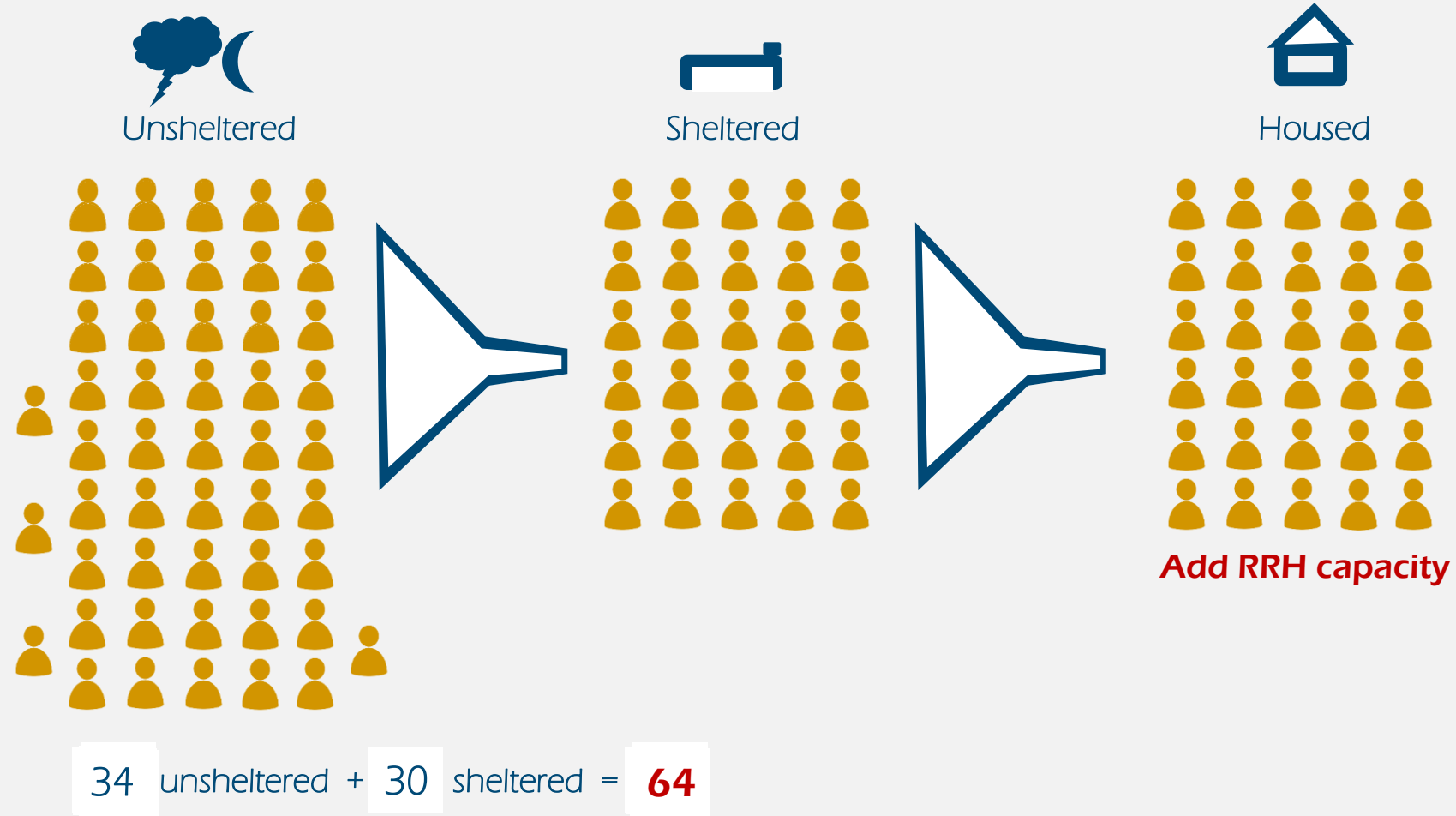
- Current funding from private philanthropy will be depleted by the end of May.
- Needed hotel room capacity is estimated at 60 rooms at any given time
- Hotel funding needed to ensure this capacity is available June – December 2020
\$910,000.00

Adding Only More Shelter Capacity



$$34 \text{ unsheltered} + 45 \text{ sheltered} = 79$$

Adding More RRH Capacity



FUND SYSTEM FLOW WITH FLEXIBILITY

Direct Services With Financial Assistance- Recommend Use of a Support Services for Families Model – (SSVF Model)

40% of Budget Direct Assistance

30%: of direct assistance budget for Emergency Response, Prevention services, Short term 1-3 month rent assistance, arrears

40%- Direct Financial Assistance – Housing 6-12 months of assistance per household

50% Provision and Coordination of Support Services-

10% Training, Occupancy, Communication, Supplies, Other allowable supportive service Expenses, Education

TEMPORARY EMERGENCY ACCOMMODATIONS- HOTEL

- **Temporary Shelter = \$910,000***
- FEMA Category B (pass through reimbursement from County) – Funding specific for COVID related shelter needs. This means Isolation, Quarantine, and COVID-19 High Risk households. (Ex. This is designed to cover the Fulton Manor Isolation location) This funding could also cover approx. 45% of total families sheltered at hotels who qualify as COVID high risk. This could be retroactive to March 20th if approved by FEMA. If approved retroactively, there could be an opportunity to recapture the private dollars already used and apply them going forward or to prevention/diversion/housing efforts. (Priority 1)
- Kent County Cares Act Treasury Funding (\$114 Million) - for remaining 65% not covered by FEMA or if FEMA funding isn't approved. This funding is very flexible. Restriction is only for COVID use. County decides.
- COVID ESG – Prioritized for COVID mitigation use with homeless population to DE intensify existing shelters, homelessness prevention (back rent and diversion), and Rehousing. These funds could be used for shelter, rapid rehousing and prevention costs if above funding sources aren't used.
 - City - \$1.12 Million
 - County - \$500,000
 - MSHDA - \$500,000

HOMELESS PREVENTION AND RAPID REHOUSING

Housing

- Kent County Cares Act Treasury Funding (\$114 Million) - This funding is very flexible. Restriction is only for COVID use. Could be used for Rehousing.
- COVID ESG – Prioritized for COVID mitigation use with homeless population to DE intensify existing shelters, homelessness prevention (back rent and diversion), and Rehousing. These funds could be used for Rehousing.
- Review of 2010 Housing Crisis HPRP information, which is our most similar time frame we anticipate needing to dedicated 3,500,000 dollars to prevention and rapid rehousing.

HOW CAN WE HELP?



Coordinated Flow to:

Reduce mobility of vulnerable populations to prevent spread through prioritized screening and coordinated allocation of resources

Provide for emergency quarantine through housing and temporary motel

Reduce risk to high risk populations



Help with identification of need and prioritization of resources



Assist with documentation of matching funds on FEMA B dollars



Coordinate and align with other efforts (CoC and Housing Stability Alliance)



QUESTIONS?